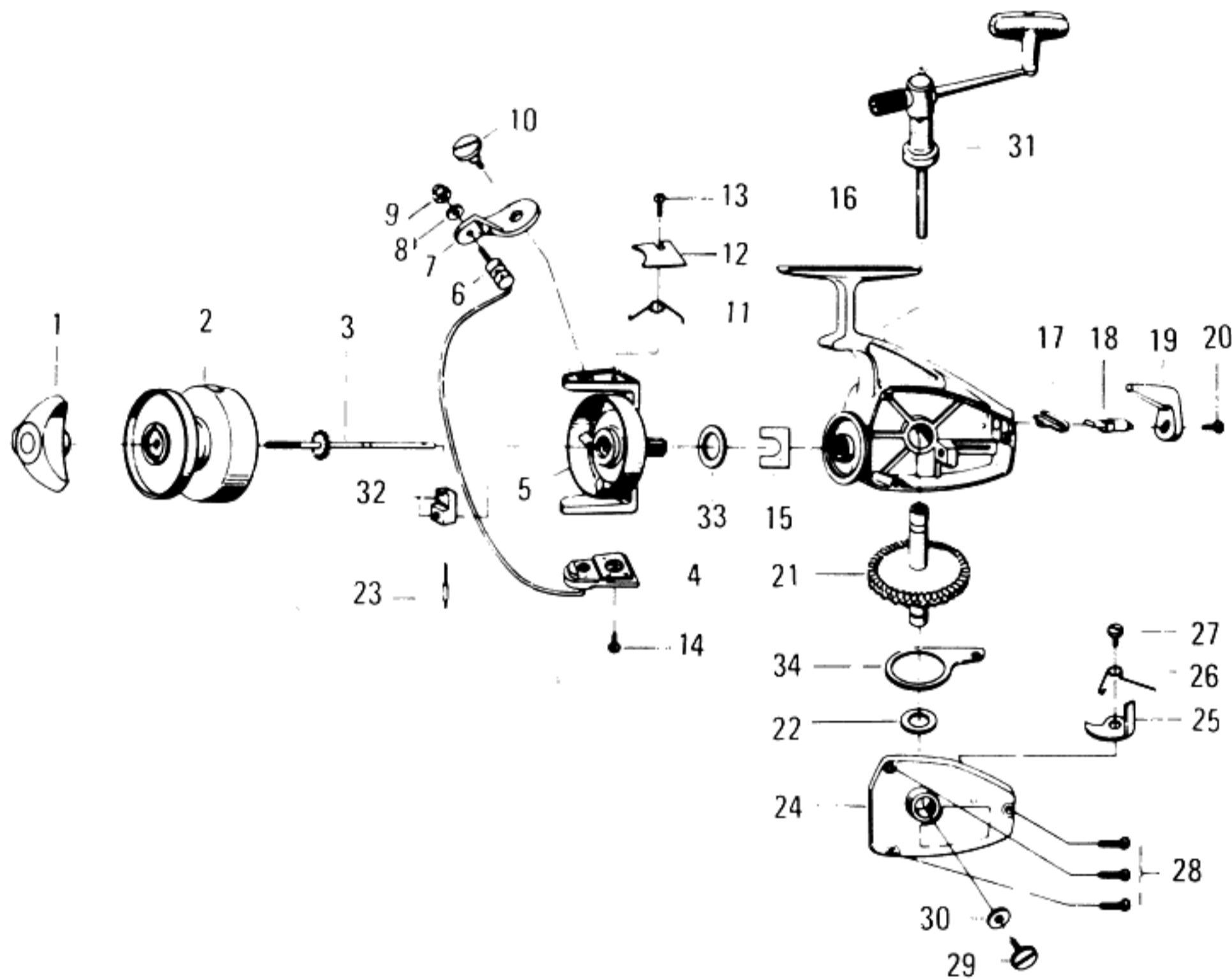
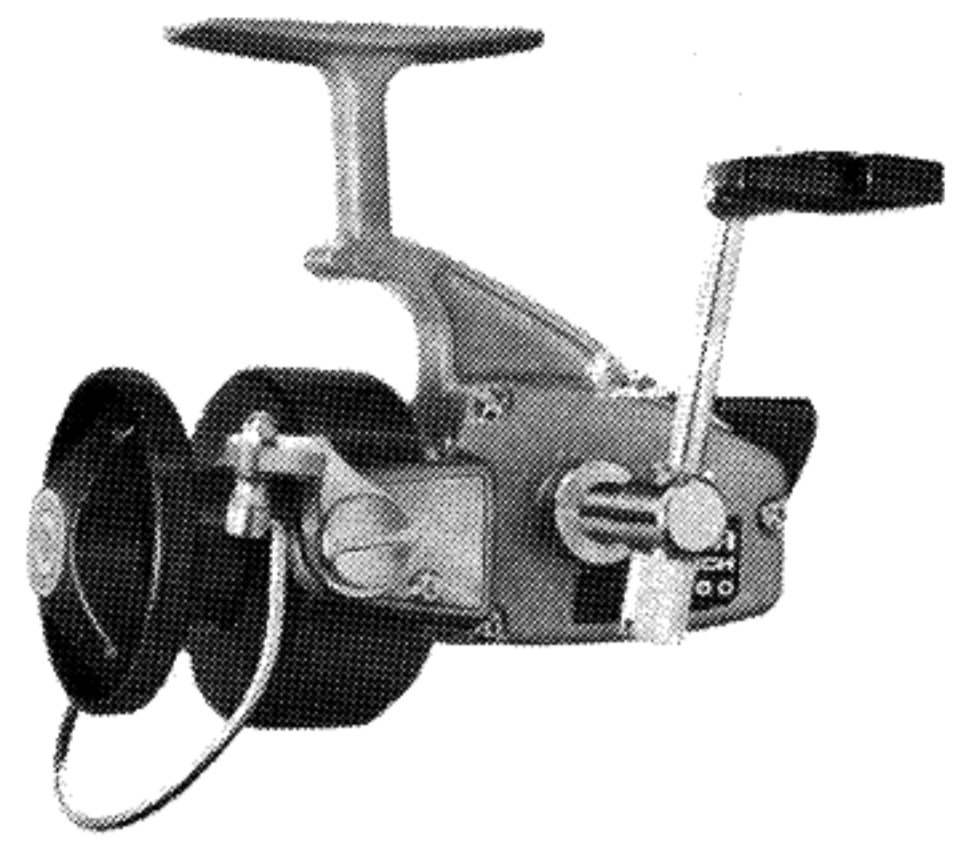


SPINNING REEL 1500



LINE CAPACITY: 200 YDS., 10 LB. TEST

Key No	Parts No	Parts Name	Key No	Parts No	Parts Name	Key No.	Parts No.	Parts Name
1	001 8101 (A00181)	Drag knob	13	351 1801 (35118)	Bail spring cover screw	24	006 0711 (A00607)	Body cover
2	001 7231 (A00172)	Spool assembly	14	351 6101 (35161)	Bail holder screw	25	110 5211 (1152)	Anti-reverse claw
3	001 6921 (A00169a)	Main shaft	15	632 6601 (63266)	Pinion retainer	26	142 3621 (14236)	Anti reverse claw spring
4	001 6821 (A00168)	Bail	16	006 0652 (A00606)	Body	27	361 4211 (36142a)	Anti reverse claw screw
5	001 6711 (A00167)	Rotor	17	150 6721 (1567)	Anti-reverse lever spring	28	351 5901 (35185)	Body cover screw
6	250 1011 (2510)	Line roller	18	460 4721 (4647)	Anti-reverse cam	29	351 5531 (35155)	Handle screw
7	230 5211 (2352)	Arm lever	19	540 4921 (5449)	Anti-reverse lever	30	372 4601 (37246)	Handle washer
8	372 8911 (37289)	Roller washer	20	351 1801 (35118)	Anti-reverse lever screw	31	001 7111 (A00171)	Handle
9	341 0801 (34108)	Bail nut	21	411 5711 (41157)	Drive gear	32	632 9201 (63292)	Oscillating support
10	361 4111 (36141)	Arm lever screw	22	370 5150 (3751d)	Drive gear washer	33	370 9820 (3798)	Rotor washer
11	141 7811 (14178)	Bail spring	23	120 7411 (1274a)	Oscillating support pin	34	480 4411 (4844a)	Oscillating slider
12	632 6501 (63265)	Bail spring cover						