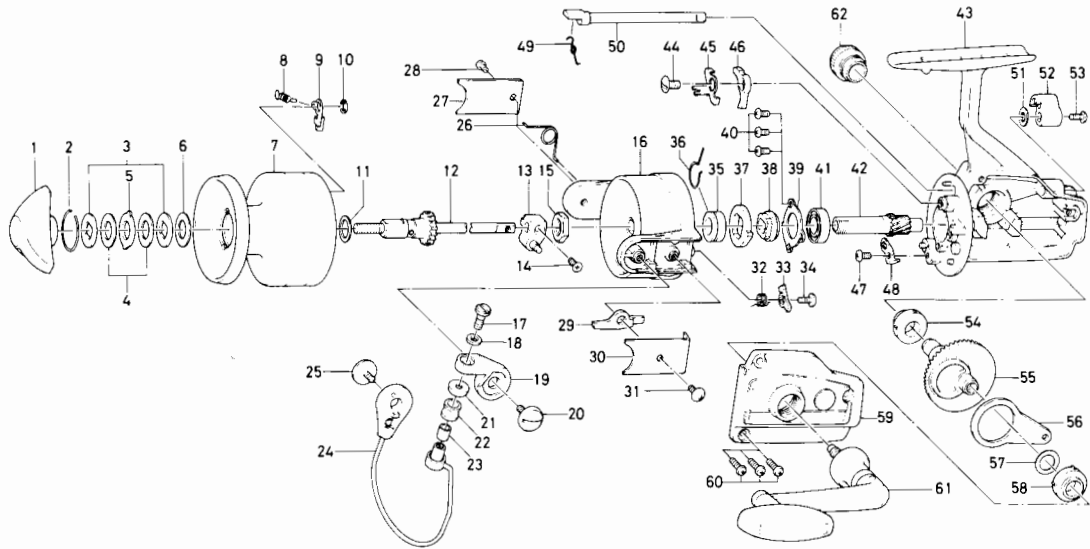


SPINNING REEL

4000XSC



KEY NO. 2 ~ 10

6-734-7201

SPOOL ASSEMBLY

Key No.	Parts No.	Parts Name
1	6-000-8241	Drag knob
2	6-170-4511	Drag washer retainer
3	6-376-0101	Drag D washer
4	6-372-6504	Disc washer
5	6-375-5401	Drag A washer
6	6-372-3004	Drag washer A
* 7	6-734-7301	Spool
8	6-145-2101	Spool click claw spring
9	6-B07-8201	Spool click claw
10	6-320-1402	Spool click claw retainer
11	6-372-9601	Spool washer
12	6-711-5801	Main shaft
13	6-637-4111	Oscillating support
14	6-351-8901	Oscillating slider screw
15	6-340-8301	Rotor nut
16	6-202-1701	Rotor
17	6-363-3111	Bail screw
18	6-375-1101	Bail washer
19	6-231-3501	Arm lever
20	6-363-5201	Arm lever screw
21	6-501-2001	Roller collar
22	6-250-4501	Line roller
23	6-502-1401	Roller metal
24	6-725-8701	Bail
25	6-363-5201	Bail holder screw
26	6-145-2001	Bail spring
27	6-B01-4001	Bail spring cover
28	6-352-2501	Bail spring cover screw
29	6-571-1201	Bail kick lever
30	6-041-9201	Bail kick lever cover
31	6-351-6101	Bail kick lever cover screw

Key No.	Parts No.	Parts Name
32	6-145-3001	Bail kick cam spring
33	6-571-1101	Bail kick cam
34	6-353-8201	Bail kick cam screw
35	6-502-1301	Spring holder
36	6-145-2901	Anti-reverse claw spring
37	6-280-9701	Ratchet
38	6-636-6711	Click gear
39	6-050-5101	Ball bearing ret. washer
40	6-351-6601	Ball bearing ret. washer screw
41	6-635-5001	Ball bearing
42	6-403-3301	Pinion gear
43	6-701-7101	Body
44	6-352-1102	Anti-reverse claw screw
45	6-041-9101	Anti-reverse claw plate
46	6-111-9201	Anti-reverse claw
47	6-351-6601	Cam kick plate screw
48	6-041-8311	Cam kick plate
49	6-144-0321	Anti-reverse cam spring
50	6-461-5001	Anti-reverse cam
51	6-373-2700	Anti-reverse lever washer
52	6-541-7301	Anti-reverse lever
53	6-352-2501	Anti-reverse lever screw
54	6-501-6101	Bearing metal
55	6-414-2901	Drive gear
56	6-481-2701	Oscillating slider
57	6-371-2800	Drive gear washer
58	6-501-6101	Bearing metal
59	6-707-1401	Body cover
60	6-351-5901	Body cover screw
61	6-748-1001	Handle
62	6-807-4701	Handle screw cap

*Not sold separately. See Spool Assembly.